



B4 Square Full Cone

The B4 series of nozzles can be used in stallations with many nozzles in which the square spray allows a better surface coverage,

Construction

Constructed from SS303 or brass.
F-B4 constructed from cast.

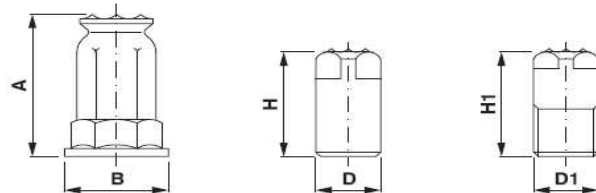


F-B4*

F-B4

M-B4

| Ø | D | H | D1 | H1 | A | B |
|--------|----|----|----|----|-----|----|
| 1/4" | ~ | ~ | 13 | 23 | ~ | ~ |
| 3/8" | ~ | ~ | 17 | 30 | ~ | ~ |
| 1/2" | ~ | ~ | 21 | 39 | ~ | ~ |
| 3/4" | 32 | 55 | 27 | 40 | ~ | ~ |
| 1" | 38 | 69 | 35 | 52 | ~ | ~ |
| 1 1/4" | ~ | ~ | ~ | ~ | 86 | 53 |
| 1 1/4" | ~ | ~ | ~ | ~ | 102 | 58 |
| 2" | ~ | ~ | ~ | ~ | 135 | 75 |
| 2 1/2" | ~ | ~ | ~ | ~ | 175 | 86 |



| Model | Ø1 mm | Ø2 mm | Flow lpm @ bar | | | | | | | | | | Spray angle @ bar | | |
|-------------------|-------------|----------|-------------------|------|------|------|------|------|------|------|------|------|----------------------|-----|-----|
| | | | 0.75 | 1 | 1.5 | 2 | 3 | 4 | 5 | 6 | 7 | 0.5 | 1.5 | 5 | |
| 1/4-M-B4-14 | 3.6 | 1.6 | 5.6 | 6.2 | 7.4 | 8.5 | 10.0 | 11.5 | 12.5 | 14.0 | 15.0 | 100 | 100 | 95 | |
| 3/8 - M-B4-20 | 4.4 | 2.4 | 8.0 | 8.8 | 10.6 | 12.2 | 14.5 | 16.5 | 18.1 | 20.2 | 21.8 | 105 | 110 | 95 | |
| 1/2-M-B4-35 | 5.9 | 3.2 | 14.0 | 15.5 | 18.5 | 21.0 | 24.9 | 29.0 | 31.0 | 35.0 | 37.0 | 105 | 110 | 100 | |
| *3/4-F-B4-71 | 3/4-M-B4-71 | 9.8 | 4.4 | 28.0 | 31.0 | 37.2 | 42.0 | 49.9 | 57.1 | 63.0 | 70.0 | 75.0 | 105 | 110 | 100 |
| *1-F-B4-130 | 1-M-B4-130 | 13.1 | 5.6 | 51.8 | 57.0 | 68.0 | 77.2 | 93.0 | 105 | 115 | 130 | 140 | 105 | 110 | 105 |
| 1 1/4-F-B4-190(1) | | 15.5 | 5.6 | 75.0 | 83.0 | 100 | 112 | 135 | 152 | 168 | 190 | 200 | 110 | 110 | 110 |
| 1 1/2-F-B4-290(1) | | 18.2 | 8.0 | 112 | 124 | 149 | 168 | 201 | 229 | 250 | 280 | 300 | 110 | 115 | 110 |
| 2-F-B4-560(1) | | 25.0 | 11.2 | 222 | 245 | 291 | 330 | 394 | 446 | 495 | 554 | 590 | 110 | 115 | 110 |
| 2 1/2-F-B4-830(1) | | 31.8 | 14.4 | 327 | 360 | 429 | 490 | 590 | 671 | 741 | 830 | 887 | 110 | 115 | 110 |

*material available upon request