

BB7 : B7 Full Cone



The BB7 and B7 nozzles feature a narrow full cone spray with high impact 30° spray angle.

They are used for high impact washing and are ideal for internal pipe washing.

Construction
Constructed from brass or SS303.

Ø	E	L max	L1 max	D	H max
1/8"	16	38	38	-	-
1/4"	20	46	48	-	-
3/8"	25	57	58	-	-
1/2"	31	75	78	-	-
3/4"	42	96	100	-	-
1"	-	-	-	35	92
1 1/4"	-	-	-	42	128
1 1/2"	-	-	-	48	155
2"	-	-	-	60	200
2 1/2"	-	-	-	75	232



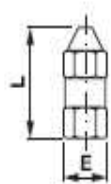
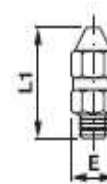
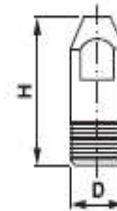
M-B7



M-BB7



F-BB7



Model		Ø1 mm	Flow lpm @ bar										Spray angle @ bar		
			2	3	4	5	6	7	10	15	20	30	0.5	1.5	5
*1/8-F-BB7-1.4	1/8-M-BB7-1.4	0.71	0.44	0.55	0.63	0.70	0.77	0.85	1.02	1.20	1.38	1.70	15	30	30
*1/8-F-BB7-2.5	1/8-M-BB7-2.5	0.97	0.81	0.98	1.20	1.30	1.40	1.50	1.80	2.20	2.50	3.05	15	30	30
*1/8-F-BB7-4	1/8-M-BB7-4	1.20	1.31	1.50	1.80	21.0	2.20	2.45	2.90	3.50	4.10	4.92	25	30	30
*1/8-F-BB7-7	1/8-M-BB7-7	1.60	2.30	2.70	3.22	3.50	3.90	4.20	5.10	6.10	7.00	8.70	25	30	30
*1/4-F-BB7-9	1/4-M-BB7-9	1.80	2.90	3.40	4.00	4.50	5.10	5.30	6.50	8.00	9.10	11.0	25	30	30
*3/8-F-BB7-14	*3/8-M-BB7-14	2.30	4.50	5.50	6.30	7.10	7.80	8.50	10.2	12.3	14.2	17.0	25	30	30
*1/2-F-BB7-30	*1/2-M-BB7-30	3.20	9.50	11.0	13.5	15.1	16.5	18.0	21.0	25.9	30.0	35.8	25	30	30
*3/4-F-BB7-50	*3/4-M-BB7-50	4.20	16.1	19.5	23.0	25.0	28.0	29.8	36.0	44.1	51.1	61.0	25	30	30
	*1-M-B7-70	5.10	22.0	27.0	32.0	35.0	39.0	42.0	50.0	61.0	70.0	85.0	28	30	30
	*1-M-B7-100	6.10	32.0	39.0	45.0	50.0	55.0	60.0	71.0	88.0	100	122	28	30	30
	*1 1/4-M-B7-150	7.40	48.0	59.0	68.0	76.0	83.0	89.0	107	131	152	180	28	30	30
	*1 1/4-M-B7-200	8.60	65.0	76.0	90.0	100	111	120	143	175	200	242	28	30	30
	*1 1/2-M-B7-250	9.60	80.0	98.0	112	125	138	150	179	220	249	320	28	30	30
	*1 1/2-M-B7-300	10.5	95.0	117	135	150	165	180	215	260	306	365	28	30	30
	*2-M-B7-350	11.1	112	136	157	176	193	211	251	305	356	430	28	30	30
	*2-M-B7-400	11.9	127	155	180	200	220	241	284	350	408	480	28	30	30
	*2-M-B7-500	13.5	160	195	224	250	275	300	355	437	512	600	28	30	30
	*2 1/2-M-B7-600	14.7	191	235	269	300	333	360	430	532	608	730	28	30	30
	*2 1/2-M-B7-700	15.9	225	275	315	357	384	412	500	610	710	850	28	30	30
	*2 1/2-M-B7-1000	19.1	320	391	453	500	550	600	713	881	1008	1220	28	30	30
	*2 1/2-M-B7-1100	19.8	350	429	498	560	610	658	787	963	1110	1350	28	30	30
	*2 1/2-M-B7-1200	20.6	386	469	540	612	665	720	858	1050	1213	1450	28	30	30

*Material upon request