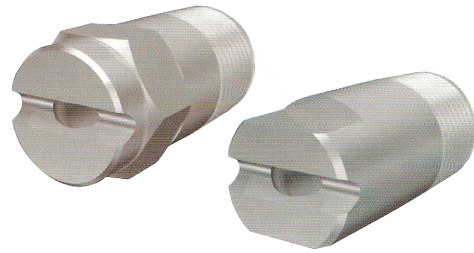


KSHR Flat Spray Nozzles



The multi-purpose KSHR flat spray nozzle can be used for the cooling of rolls, steel sheets and billets etc, the spraying of chemicals, and dust prevention and defoaming. It also has various washing purposes.



Specification

Wider spray angle than other flat spray nozzles (16° to 20° across the spray thickness).

Clog resistant

Construction

Constructed from SS303 or brass



Connecting threads	Model			Model number	Minimum orifice diameter (mm)	Flow rate l/min @ bar						Spray angle @ bar						
	R threads		Rc threads			1	2	3	5	7	10	15	1	2	3	5	10	
	KSR	KSHR	KSHR-H															
1/4"	•	•	•	0265	0.8	1.15	1.63	2.0	2.6	3.1	3.7	4.5	52°	61°	65°	70°	72°	
	•	•	•	0280	0.7	1.15	1.63	2.0	2.6	3.1	3.7	4.5	62°	72°	80°	87°	91°	
	•	•	•	0365	1.2	1.73	2.5	3.0	3.9	4.6	5.5	6.7	52°	61°	65°	70°	72°	
	•	•	•	0380	1.0	1.73	2.5	3.0	3.9	4.6	5.5	6.7	62°	72°	80°	87°	91°	
	•	•	•	0465	1.5	2.3	3.3	4.0	5.2	6.1	7.3	8.9	54°	62°	65°	70°	72°	
	•	•	•	0480	1.2	2.3	3.3	4.0	5.2	6.1	7.3	8.9	64°	73°	80°	87°	91°	
	•	•	•	0665	1.9	3.5	4.9	6.0	7.8	9.2	11.0	13.4	54°	62°	65°	70°	72°	
	•	•	•	0680	1.6	3.5	4.9	6.0	7.8	9.2	11.0	13.4	67°	77°	80°	83°	86°	
	•	•	•	0865	2.1	4.6	6.5	8.0	10.3	12.2	14.6	17.9	56°	63°	65°	68°	70°	
	•	•	•	0880	1.8	4.6	6.5	8.0	10.3	12.2	14.6	17.9	69°	77°	80°	83°	84°	
	3/8"	•	•	•	1065	2.6	5.8	8.2	10.0	12.9	15.3	18.3	22.4	56°	63°	65°	68°	70°
		•	•	•	1080	1.9	5.8	8.2	10.0	12.9	15.3	18.3	22.4	70°	78°	80°	83°	84°
•		•	•	1565	3.0	8.7	12.2	15.0	19.4	22.9	27.4	33.5	56°	63°	65°	68°	70°	
•		•	•	1580	2.7	8.7	12.2	15.0	19.4	22.9	27.4	33.5	70°	78°	80°	83°	84°	
•		•	•	2065	3.6	11.5	16.3	20.0	25.8	30.6	36.5	44.7	57°	63°	65°	68°	70°	
•		•	•	2080	3.3	11.5	16.3	20.0	25.8	30.6	36.5	44.7	73°	78°	80°	82°	83°	
•		•	•	2565	4.0	14.4	20.4	25.0	32.3	38.2	45.6	55.9	57°	63°	65°	68°	70°	
•		•	•	2580	3.5	14.4	20.4	25.0	32.3	38.2	45.6	55.9	73°	78°	80°	81°	82°	
1/2"		•	•	•	3065	4.4	17.3	24.5	30.0	38.7	45.8	54.8	67.1	57°	63°	65°	68°	70°
		•	•	•	3080	3.8	17.3	24.5	30.0	38.7	45.8	54.8	67.1	73°	78°	80°	81°	82°
	•	•	•	4065	5.0	23.1	32.7	40.0	51.6	61.1	73.0	89.4	57°	63°	65°	68°	70°	
	•	•	•	4080	4.7	23.1	32.7	40.0	51.6	61.1	73.0	89.4	75°	78°	80°	81°	81°	
3/4"	•	•	•	5065	5.8	28.9	40.8	50.0	64.5	76.4	91.3	112	57°	63°	65°	68°	70°	
	•	•	•	5080	5.2	28.9	40.8	50.0	64.5	76.4	91.3	112	75°	78°	80°	81°	81°	
	•	•	•	6065	6.5	34.6	49.0	60.0	77.5	91.7	110	134	57°	63°	65°	68°	70°	
	•	•	•	6080	5.8	34.6	49.0	60.0	77.5	91.7	110	134	75°	78°	80°	81°	81°	
1"	•	•	•	7565	7.0	43.3	61.2	75.0	96.8	115	137	168	57°	63°	65°	68°	70°	
	•	•	•	7580	6.3	43.3	61.2	75.0	96.8	115	137	168	75°	78°	80°	81°	81°	