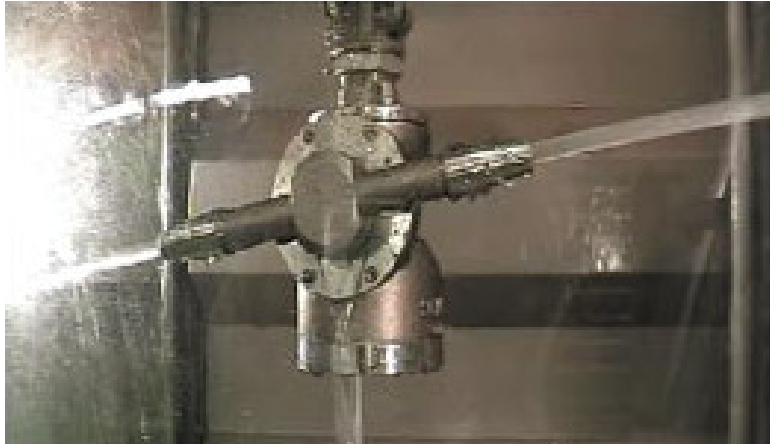


SC15TW

Scanjet tank cleaning equipment



Product Summary

The SC 15TW is a 1.5" dual or four nozzle automated tank cleaning machine, constructed of 316 stainless steel and other highly corrosion resistant materials.

The SC 15TW has a fixed to moving gear ratio of 47 to 49 allowing it to produce a homogenous 360° pattern that is superior to that of any other rotating jet head in it's class.

The SC 15TW is an integrated turbine class type of tank cleaning machine and employs an adjustable turbine and flow through gearbox. The adjustable turbine allows the rotation speed of the SC 15TW to be adjusted without the need of changing costly starters and/or gearing found in other similar cleaning devices

Quality Control, Compliances & Certification

The Sc 15TW is produced in accordance with ISO 9001 Quality Standards and our certificate of conformity and accreditation is available upon request.

Additionally, the SC 15TW conforms to United States ASME standards for construction and others... available upon request.

Typical applications for the SC 15TW

- Road and rail tanker cleaning
- Portable cleaning for contractors
- Fermenter tank cleaning
- Storage tank cleaning
- Wine storage tanks and fermenters
- Brewery storage tanks and fermenters

KEY FEATURES

SC15TW

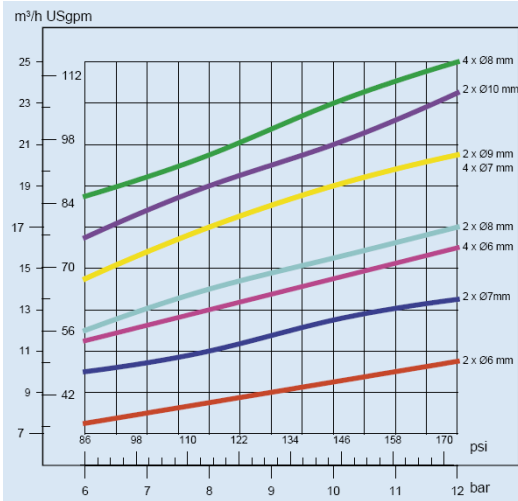
- Rugged construction
- Adjustable turbine
- ISO 9001 Quality
- Exceptional jet lengths
- East maintenance
- 316ss construction
- Optimized cycle times
- Flow through gearbox

SC 15TW

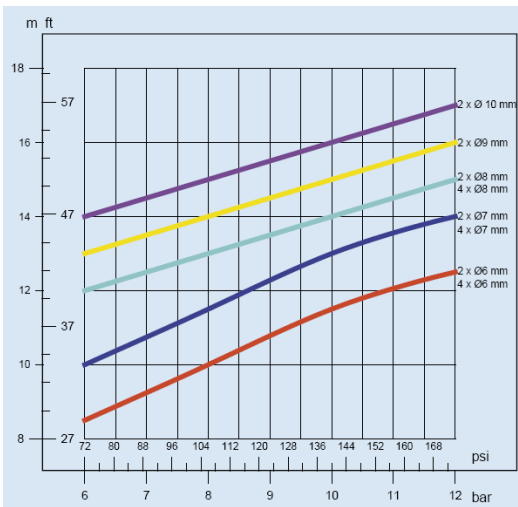


SC15TW

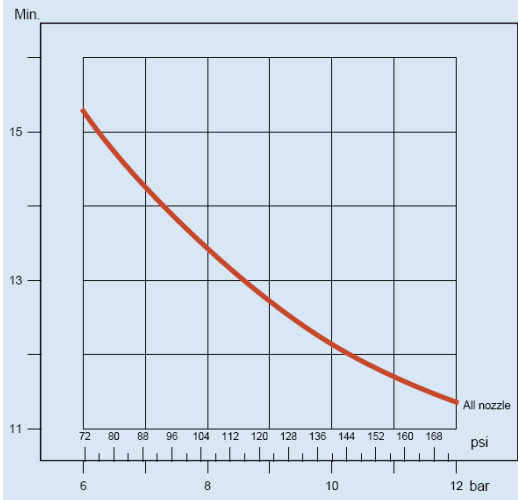
TECHNICAL PERFORMANCE



Pressure/flow

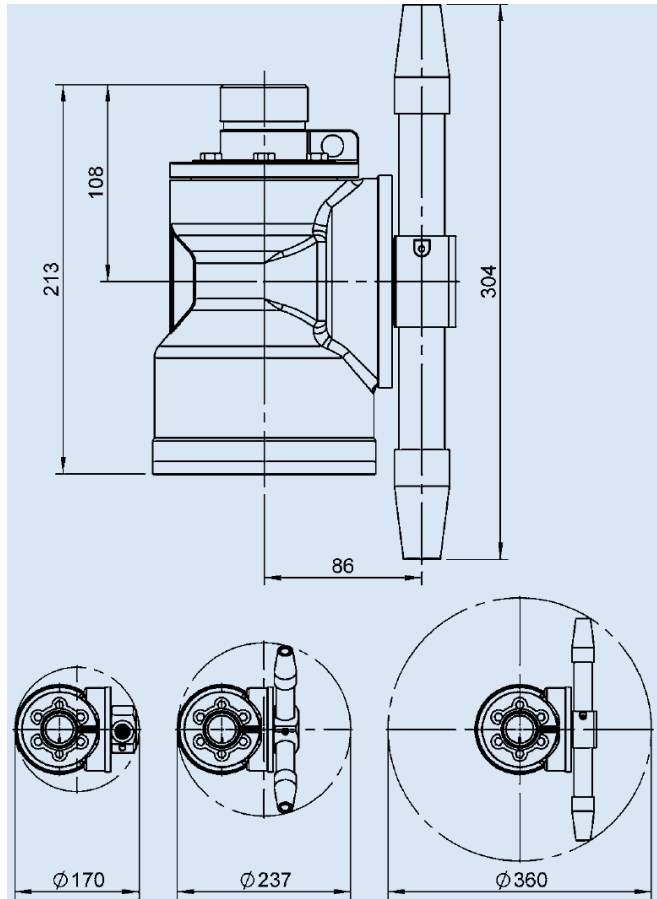


Jet length



Pattern Time

DIMENSIONS



Specification

Flow		5-24 m³/hr
Pressure	inlet	6-12 bar
	maximum	14 bar
	recommend	8 bar
Temperature	Max. working	95°C
	Max. ambient	140°C
Rotation speed		1-5.4 rpm
Weight		9.2 Kg
Inlet connection		1.1/2" BSP or NPT Flanges as options
Material		AISI 316, PTFE, PEEK
Lubrication		Cleaning fluid